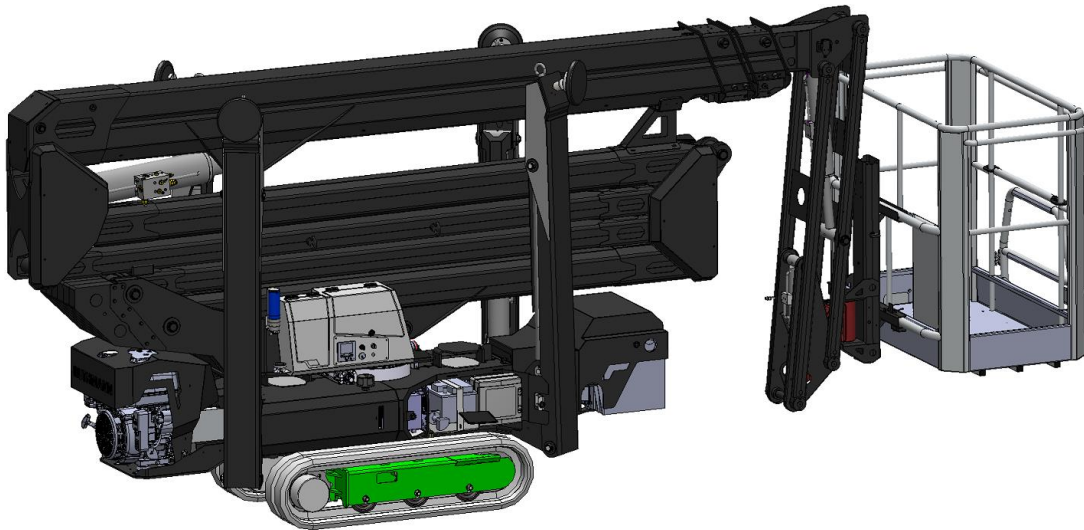


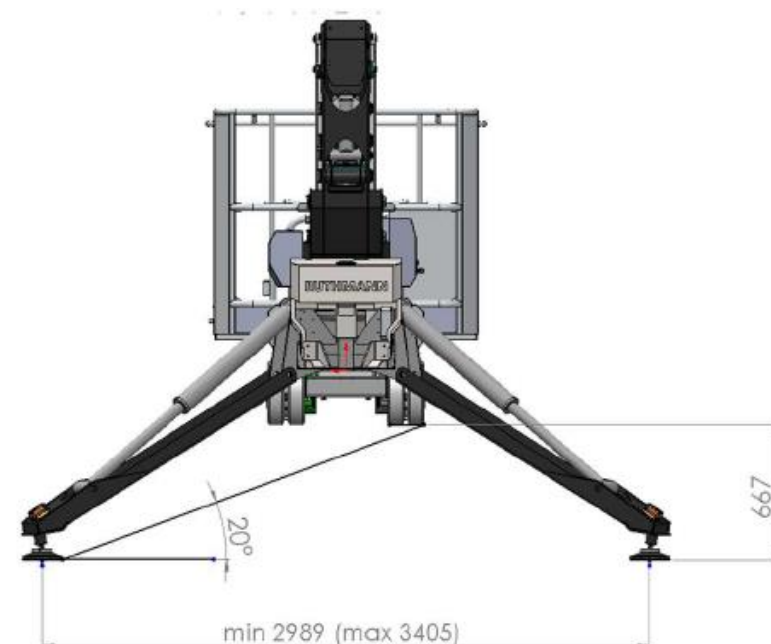
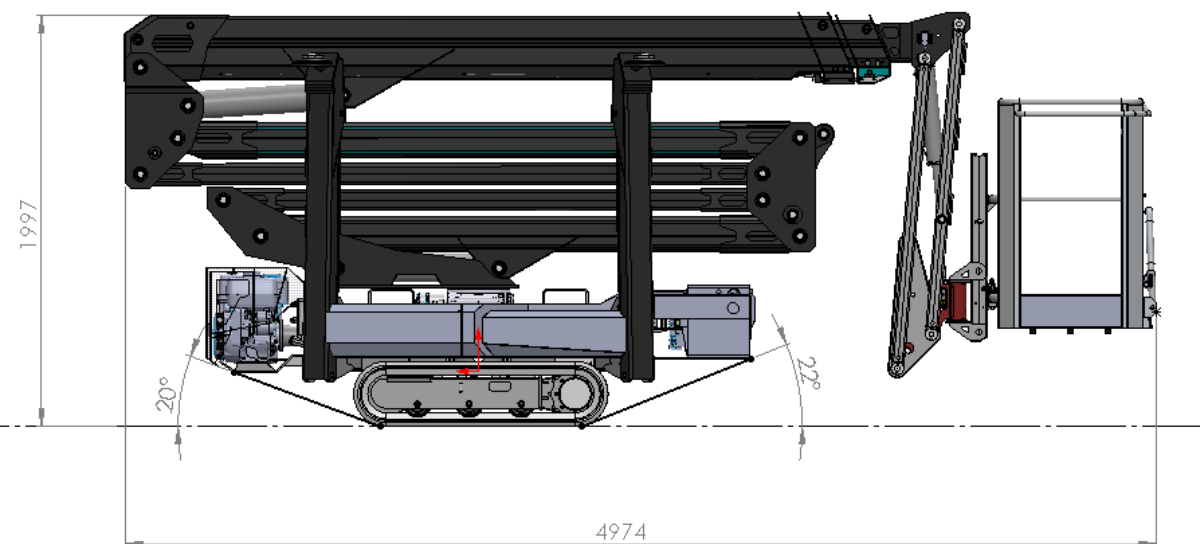
# RUTHMANN **BLUELIFT**

## SA20

TOP TRACKED SPIDER LIFTS SERIES  
CREATED FOR  
INACCESSIBLE WORKING PLACES



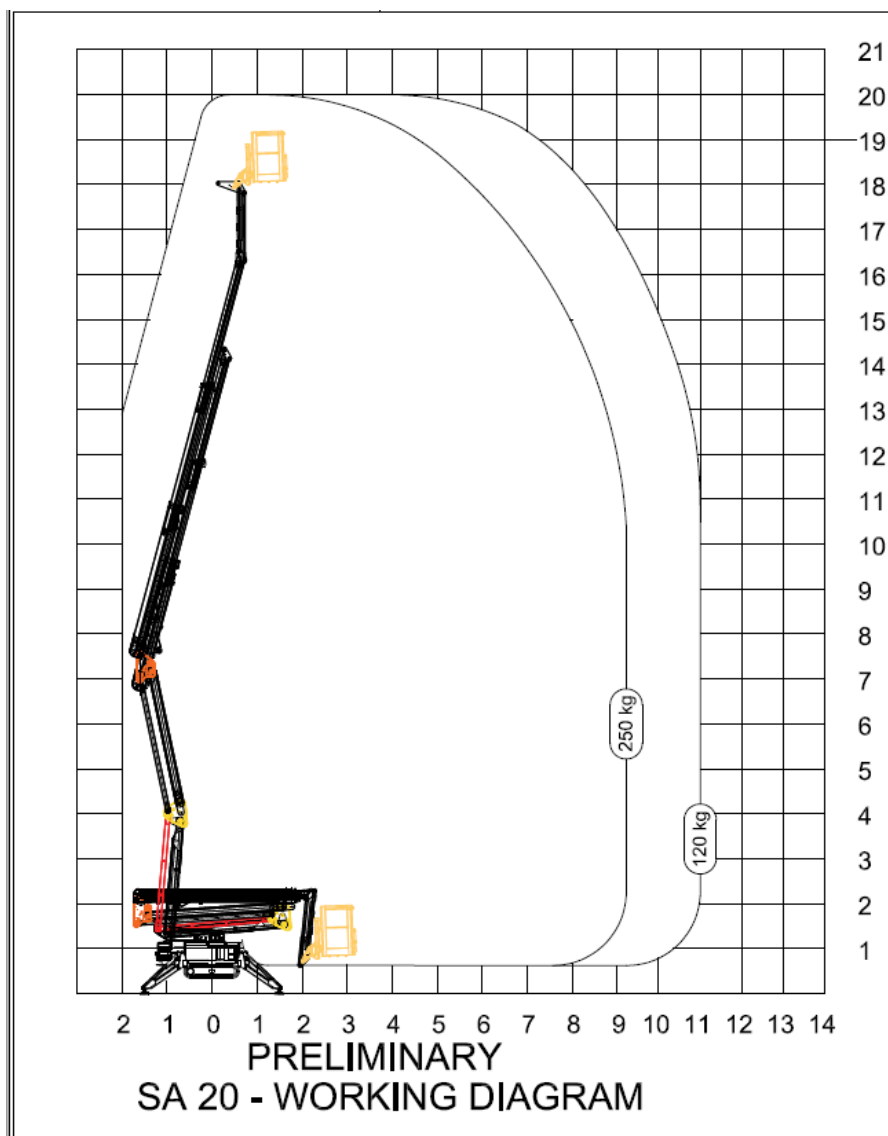
## OVERALL DIMENSION :



Length, overall (m) *	4,97 m
Length, basket removed (m) *	4,27 m
Width (m) *	0,80 m - 1,1 m
Height (m) *	1,997 m
Foot print (m) *	2,99 m x 2,99 m
Total weight (kg) *	max 2950 kg (including Lithium battery)
Power Source:	Honda iGX390 petrol engine / 230V electric motor (BlueHybrid / BlueLithium as optional)

\* All measurements are approximate and unbinding on us. Deviation up to 2% are possible. Technical alteration reserved.

## WORKING ENVELOPE :



## RUTHMANN BLUELIFT SA20



Working height (m) *	20 m
Max outreach (m) *	11 m / 120 kg - 9,0 m / 250 kg
Up and over clearance (m) *	7,75 m
Basket dimension (m)	1,3 m x 0,7 m x 1,1 m
Basket capacity (kg)	250 kg
Basket rotation (°)	160° (80+80)
Turret rotation (°)	360°
Jib	110°

\* All measurements are approximate and unbinding on us. Deviation up to 2% are possible. Technical alteration reserved.

## New design :

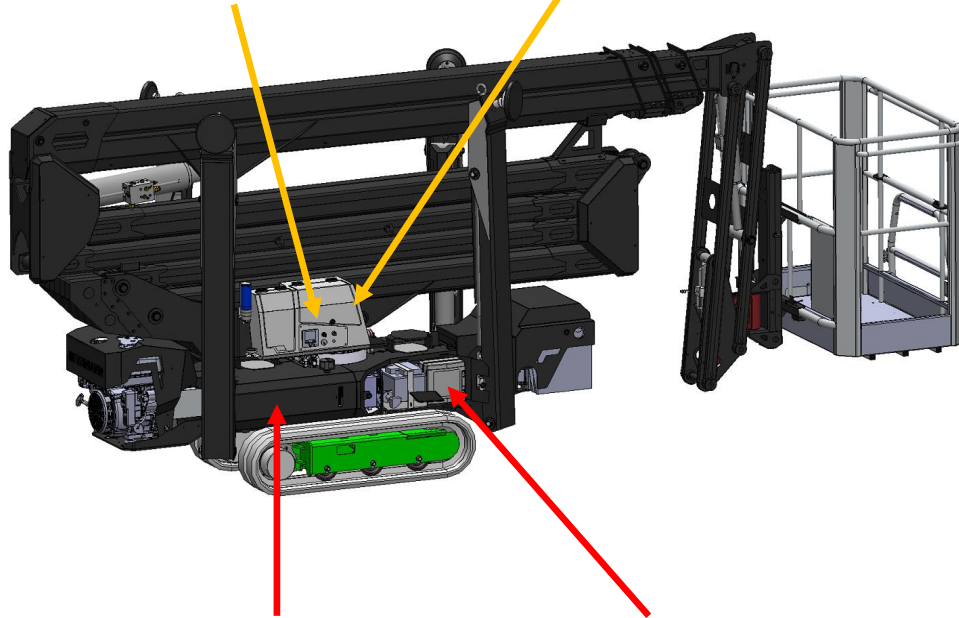
**Main Starting Cockpit  
with Interactive Display**



**Storage compartment  
for remote control**



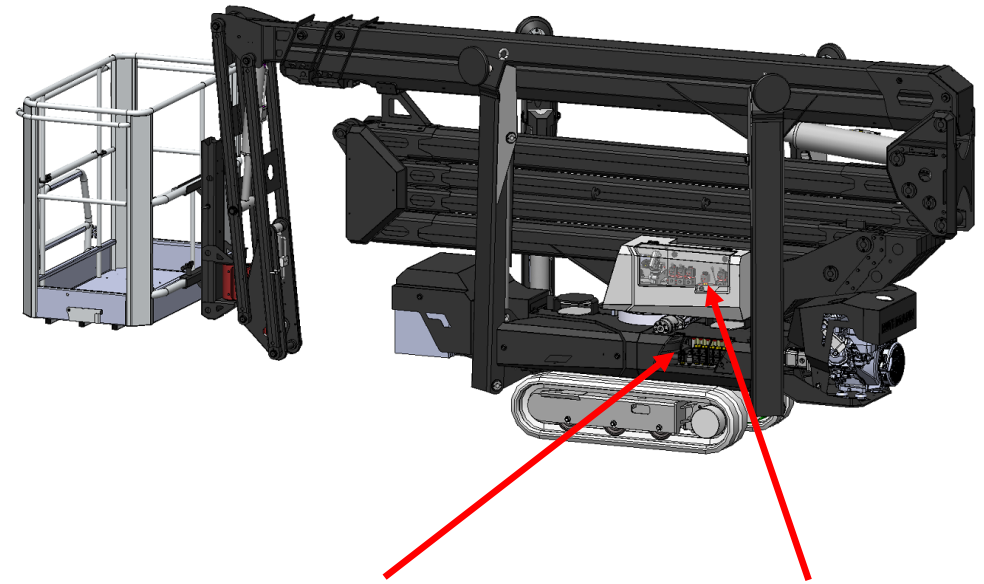
# RUTHMANN **BLUELIFT** SA20



**External and  
removable  
Hydraulic Oil tank**

**Easy access:**

- electrical motherboard and connection point
- Battery 12v



**Easy access to  
outriggers and crawlers  
emergency controls**

**Easy access to  
Emergency Lowering  
controls**

## **RUTHMANN BLUELIFT SA20**

### **Standard outfit:**

- **Detachable basket, large (1300x700x1100mm)**
- **Basket Rotation**
- Moment Limiting Device
- Driving possible with jib arm raised (with selector)
- Protection on outrigger cylinders
- 230V power supply in basket
- Air/Water supply in basket (1 hose)
- **Electric motor (230V)**
- **Honda iGX390 petrol engine**
- Automatic Start & Stop
- **Track width adjusting system**
- **Hetronic Cable remote control**
- **Self Stabilizing System**
- Dual hydraulic movements
- Double speed drive system
- Speed control on lower boom
- Automatic center position of turret

### **OPTIONAL on demand:**

- Diesel engine Hatz
- No-marking rubber tracks
- Hetronic Radio remote control
- Special Color (mono colour on boom)
- GO HOME function
- Version "BLUE LITHIUM"
- Version "BLUE HYBRID"
- Orange led on each outrigger
- N.4 foot plates 400x400x40
- N.2 Holders for supporting plates